

We love the city: Playable city

Air Collection

Escofet®

- 1 Urban context
- 2 Rotational moulding
- 3 Characteristics
- 4 Benefits and uses
 - Stul*
 - Starfish*
 - Twig*
 - Sit*
 - Extasi*
- 5 Colour chart

We love the city: Playable city

Air Collection

Escofet®

Urban context

The need to recover public space for people has become the model for cities and the new paradigm is to find solutions that will allow us to improve the existing scenario. To infuse life into streets and squares, they must be redefined as public spaces that are more homelike and comfortable.

In this regard, one of the actions that brings a positive and immediate impact is to select site furnishings that favour meeting, talking, and playing, thereby promoting a more human and sustainable city.





Rotational moulding

High-density polyethylene (HDPE) rotational moulding is a plastic transformation process that permits the manufacture of hollow or double-walled parts.

Recycled and recyclable

Product collection made from a single recyclable type of material, and therefore environmentally sustainable. In addition, we have a black colour made from 100% recycled material.

Non-porous

The peculiarity of non-porous HDPE material means that its surface is easy to wash with pressurised water and a degreasing detergent that contains surfactants. It is disinfected with a hydro-alcoholic solution.

Flame retardant

The product is intended to be used as urban and interior furniture, according to the standard EN 13501-1:2019 in relation to its reaction to fire behaviour is classified "E". Similarly, the test results meets the requirements of UNE EN 1021-1:15 and UNE EN 1021-2:15: Reaction to fire tests. Ignitability of upholstered furniture subjected to direct impingement of flame.



Twig, Hickson Road Reserve, Sydney

Characteristics

The appropriate manufacturing system for short production runs with the option of customisation with a wide range of colours that can be adapted to different contexts.

Lightweight

Weight plays an important part in some projects such as interiors or ephemeral projects in which priority is given to mobility without machinery.

Colorful & playful

Colour is becoming more and more necessary in public space, and tactical urbanism offers the possibility of playing with colour and compositions.

Lighting

Optionally, a LED kit can be built into the white models for backlighting purposes.

Sustainability

Site furnishings made from a recyclable plastic. The option in black color is 100% recycled, and consequently it is an environmentally sustainable product. Our aim is to transform plastic waste into a product of value for urban landscapes and public areas.

Soft shapes and texture

Their formal rounded appearance and the sensation of contact with the parts imbues the collection with visual and tactile softness.

Easy installation and maintenance

It can be installed with reversible accessories or permanently fastened with hidden screws. It can also be ballasted with sand, with no fastening elements in this case.

Resistance and durability

The material attributes of HDPE, such as its resistance to UV light, excellent behaviour in outdoor conditions and ease of maintenance, result in products with high resistance and long useful lives, without diminishing their performance.



Sit, Lake Como, South Korea

Benefits and uses

The benefits of the material combined with a design that pays attention to ergonomics and tactile values, with soft surfaces and no sharp or aggressive edges, provides considerable safety against impact, making them extremely suitable for use in children's playgrounds, public spaces surrounding schools or city play areas.

School accesses and playgrounds

Transformation of school environments to convert them into safe, healthy places with spaces in which to stay and play as well as a reduction in pollution levels.

Tactical urbanism

Small-scale, low-budget actions to improve urban environments, temporary adaptations to assign new uses targeted at cities for people.

Children's playgrounds

Spaces in which to play in parks, gardens and squares, environments designed to ensure enjoyment and safety for children, fostering sociability, learning and integration.

Deterrents for pacification areas

Measures to improve streets in order to promote travel on foot and on bicycles and the use of public transport. Extension of pavements, more bicycle lanes, more green areas or the reduction of lanes for private vehicles.

Corporate spaces

The meaning of a space is of the utmost importance in any project, and even more so in a corporate setting, where the use of colour or versatility of uses is essential.

Shopping centres

Shopping centres suffer considerable deterioration due to their high frequency of use and competition with other centres that require constant renovation. This collection makes it easy.

Interior spaces and rooftops

Weight plays an important part in some projects in which the fixtures must rest on the deck. In indoor areas or in ephemeral projects, they must be movable.

Stul

Escofet_lab, 2021

Smooth texture / 12 kg / Ø60 x 52 cm

Stul is a functional stool for sitting on or that inspires jumping games. It is ideal for green areas and children's playgrounds. It can also be used as a pylon with a swivel seat on private terraces or in indoor areas such as libraries or other institutions.





Starfish

Emilio Tuñón, 2013

Micro-textured / LED / 56 kg / 186 x 170 x 45 cm

The *Starfish* backless bench has a biomorphic, radial design that allows for flexible use, whether grouped or individual, preserving the privacy of the user. A meeting point for several units, linked by their coinciding ends or dotting the area to create a constellation of backless benches that creates in itself a space of interaction for users.





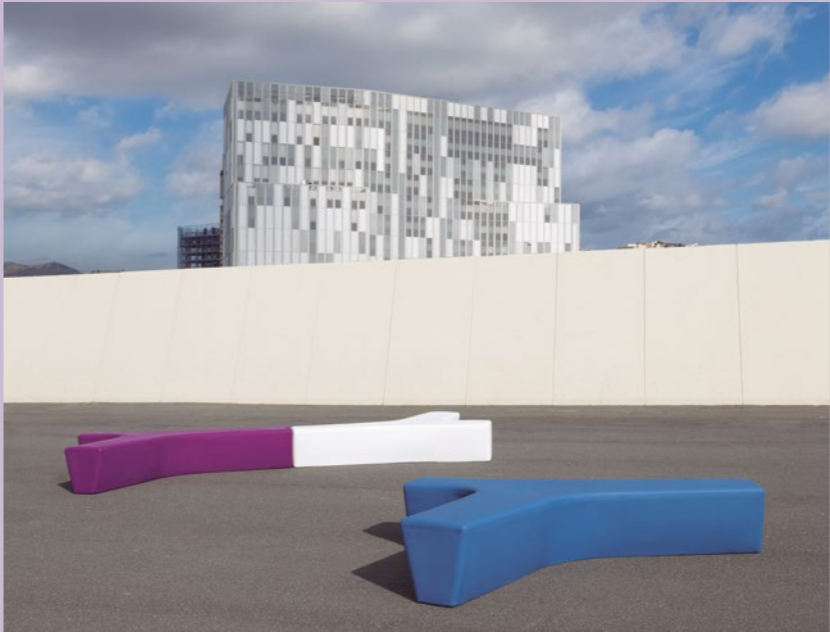
Twig

Alexander Lotersztain, 2009

Micro-textured / LED / 57 kg / 61 kg / 237 x 193 x 46 (79) cm

Twig is a backless bench system that embodies the concepts of modularity, fluidity, connection and interactivity with its users. Its organic aggregation, based on a single model with three arms, allows for the creation of “meeting points” in the landscape.





Sit

Diego Fortunato, 2013

Micro-textured / LED / 240 x 207 x 77 cm / 59 kg / 240 x 68 x 47 cm / 50 kg / 75 x 115 x 77 cm / 21 kg / 75 x 68 x 47 cm / 12 kg

The *Sit* collection formed by a backless bench and a stool, with an optional back, is based on the idea of soft-textured site furnishings with rounded lines, lightweight and visually attractive, that naturally blends into any environment.





Extasi

Arriola & Fiol, 2013

Micro-textured / LED / 40 kg / 165 x 152 x 45 cm

The *Extasi* backless bench is a revised version of an urban element that was originally designed in moulded concrete, using a new material. With a triangular volume and rounded edges, *Extasi* has been designed for use in indoor or outdoor areas.







Colour chart

Colour is taking on more and more relevance in public space. In the present day, when citizens are pressing for new urban solutions to be tested within the context of tactical urbanism, HPDE models offer us the possibility of playing with colour and its compositions in a palette of up to 18 different shades.

Lighting

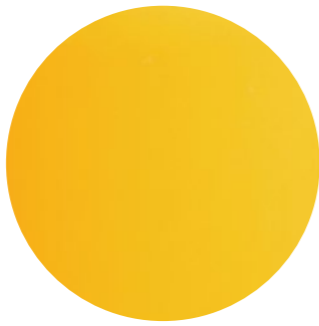
Optionally, a LED kit can be built into the white models for backlighting purposes.

Customization

Other colours available on request according to project requirements.



RBN. White



RAO. Colza Yellow



RAB. Pistachio



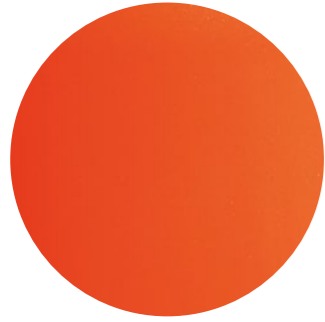
RVU. Pale Green



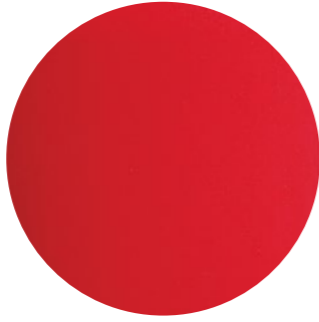
RBA. Sand Beige



RG. Basalt Grey



RNP. Orange



RRR. Ruby Red



RRT. Red



RGT. Smoke Grey



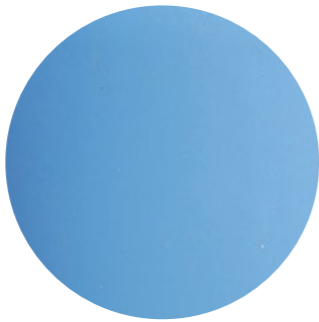
RGS. Silk Grey



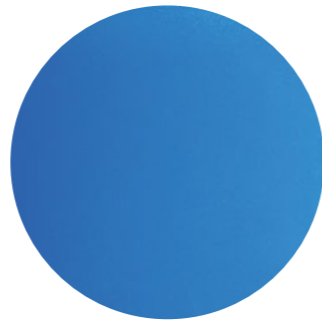
**RNG. Black
100% Recycled**



RVS. Violet



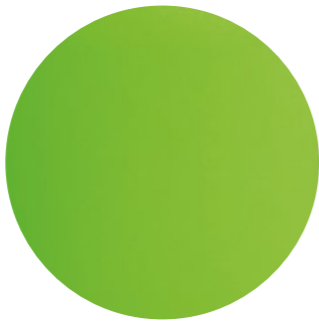
RVL. Brilliant Blue



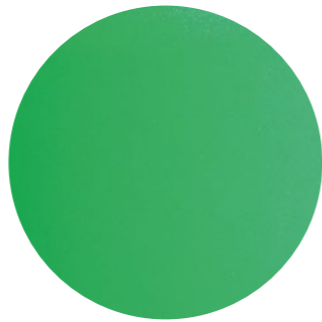
RAS. Denim Blue



RAC. Steel Blue



RVA. Lime Green



RVE. Mint Green

*The colours shown in this document may vary from the product colours.

