

*Robinia Play Sculptures*

**KOMPAN**  
DESIGNSTUDIO







UNIQUE CUSTOM PLAY SCULPTURES



# Tailor-made

## UNDERSTANDING YOUR DREAM

A school may want a play sculpture that symbolises wisdom and learning.

A local community may want their play sculpture to tell a story about the community, connecting one generation to the next.



### FINDING THE PERFECT CONCEPT

Together we find the perfect concept for your story. For the school that wants to signal wisdom, we can decide on the concept of an owl.

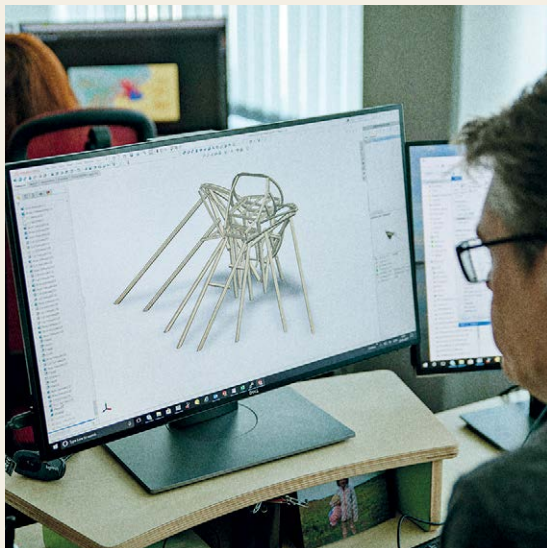
### RESEARCHING THE CONCEPT

Next, the design team will study the phenomena in order to find the features that visualise your story the right way. For an owl, the eyes are key.

### SKETCHING DESIGN IDEAS

The first sketches are made and delivered to you in order to test ideas and find the perfect design for you.





**LOADED WITH PLAY – FINAL ENGINEERING**  
Your play sculpture is loaded with the portfolio of play features that we have invented throughout half a century. The engineers draw it up to make sure the play sculpture as a structure is safe and sound for the kids.

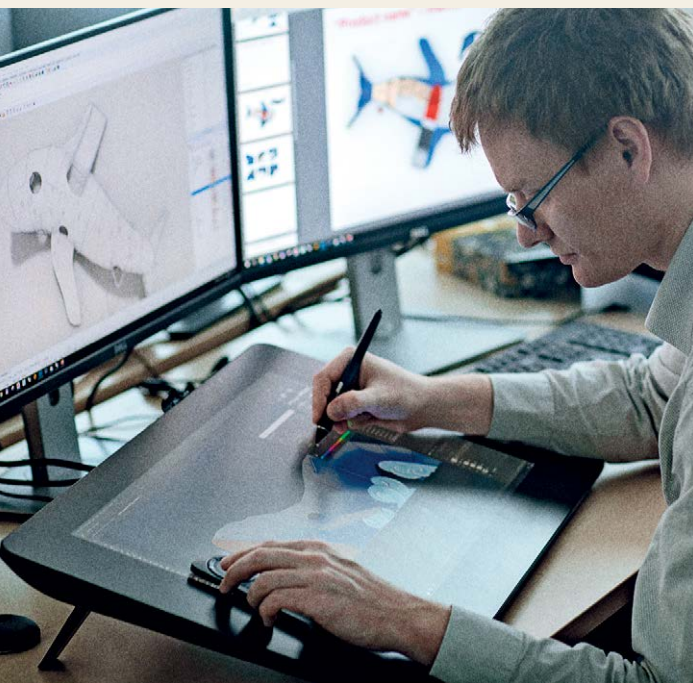
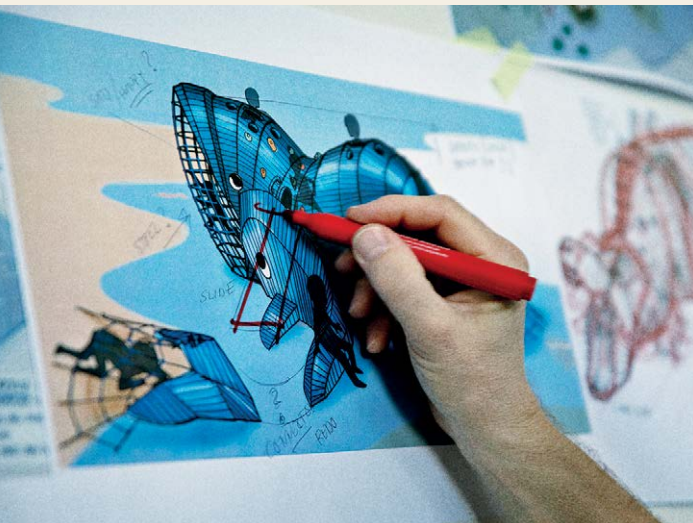


**BUILDING THE PLAY SCULPTURE**  
Skilled craftsmen build the play sculpture of your dreams, coordinating with designers and engineers to get it right.



**INSTALLATION**  
Everything is taken apart, transported, and rebuilt on site by our skilled people. Nothing is left to chance or inexperience.



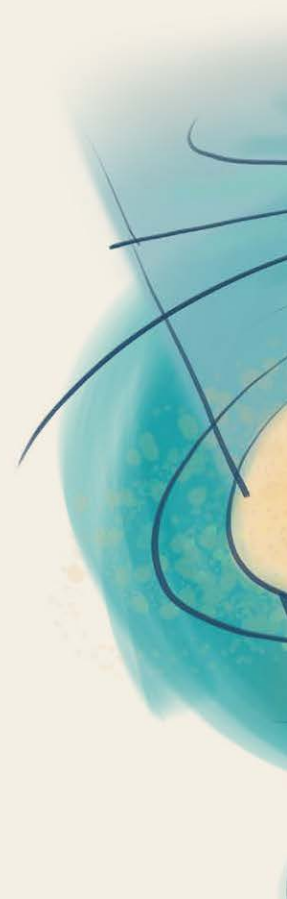


## *Designing your playground with a play sculpture*

In order to design the right play sculpture, we want to understand the history of the area, the story, the surroundings, the users, their age group, their diversity, and a number of other factors.

Next we will bring the first conceptual idea to the table and later more accurate sketches. Our architects and designers apply all their creativity to give you the best they can, so please allow time for them to do their best.

At the end, we will show you a precise visualisation of the right Robinia Play Sculpture for you. We do this so you can feel confident that you are getting the play sculpture that will serve your community for decades to come.











*Loaded with play activities that  
develop body, mind, and  
friendships*

Our play sculptures are not just art, they are loaded with all the innovative play features that we have developed over half a century.

This is our way of making sure that the children are wowed to come and play, are motivated to keep playing and come back, and while playing develop physical, social, cognitive and creative life skills. And we load it with play for children of all abilities. Everybody is included.

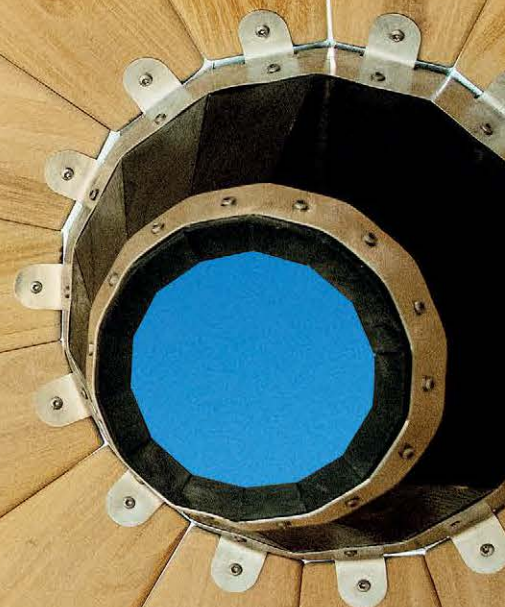
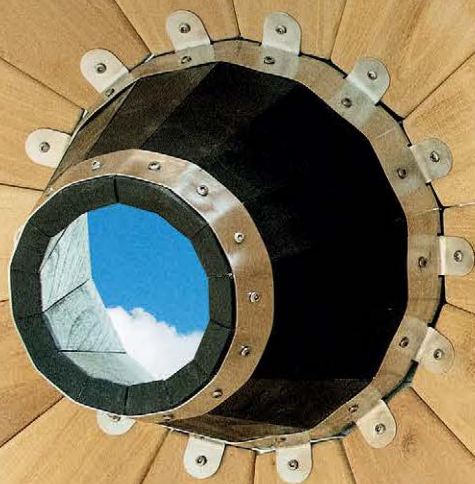


*More than fun,  
more than art  
– the art of fun*





*Handcrafted like  
fine furniture ...*







## *Because children deserve the best to play on*

The play sculptures are created by dedicated craftsmen who are masters at taking wood and, with trained eyes and skilled hands, turn it into something rather special. Through their passion and expertise, the sculptures end up having the finish of fine pieces of furniture.





# Born to be wise

Developing body, mind and friendships



















# The Owl

## A symbol of wisdom

It's the first day back after the long summer break. Charlie and Mary each take a book and look out the school library window. Sunny, the temptation to abandon their research in favour of outdoors was immense. In the distance, in a grassy dip surrounded by young silver birch trees, stood something they'd never seen before, a giant, blue, yellow and grey owl. It was, they both agreed, quite magnificent. 'That's funny,' says Mary, 'here we are studying owls

and there's a gigantic one out there.' Charlie picking up his book, looked at the big yellow eyes that had already attracted some young children. 'Maybe it would still be studying if we go and see what it is.' The owl was huge and the two clambered in, Mary using the rope netting, Charlie scaling a wing by hand and foot. 'It's just like our school logo,' said Charlie.

'That's because the owl is wise,' added Mary. 'The book says there are 216 types, tawny, barn, snow ....' '... and wooden, now there are 217!' adds Charlie as the two friends continued studying, through play. The owl was wise and wonderful. Over many years, it would teach many children many things, but being wooden, it said nothing.





## Loaded with play

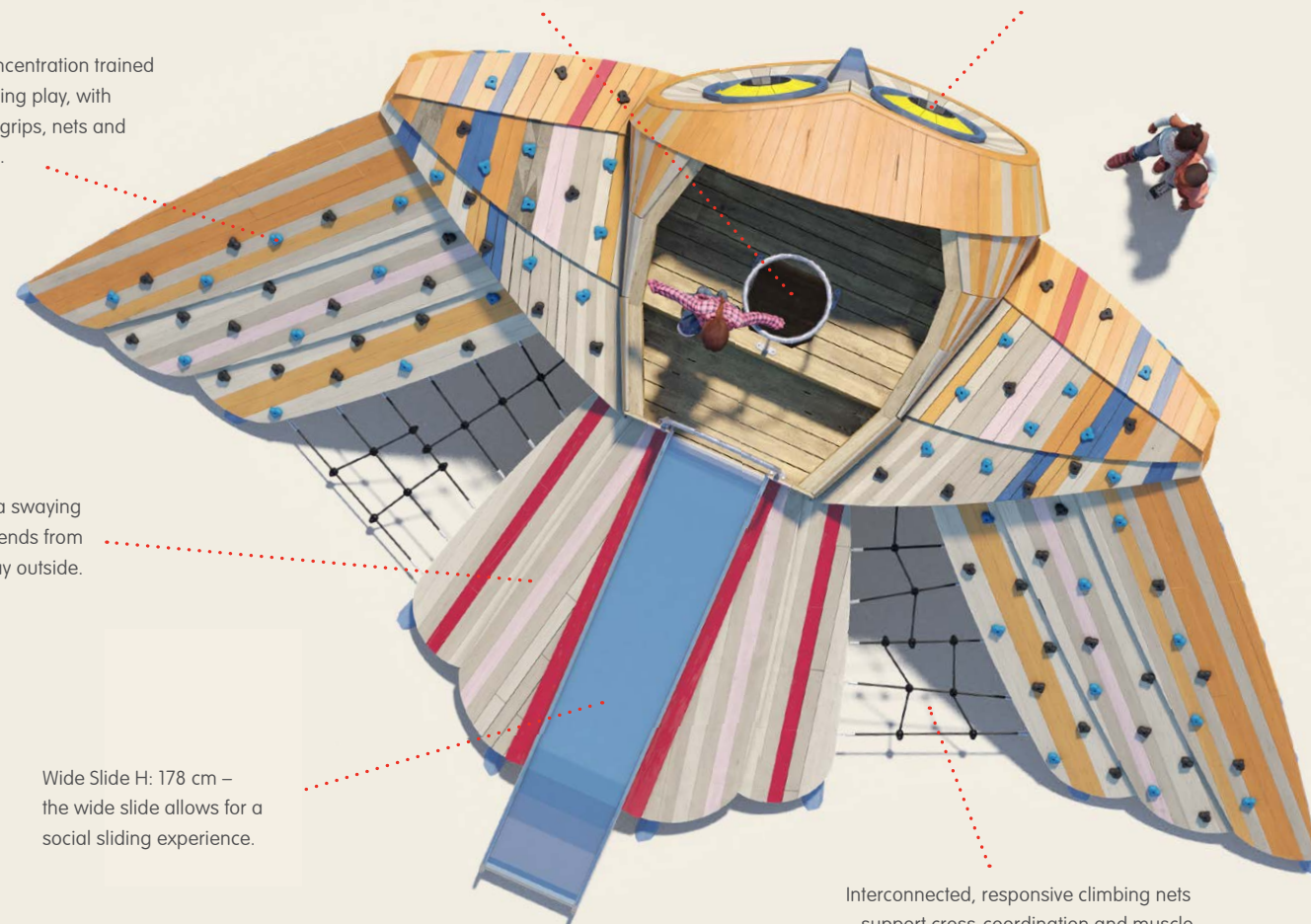
Dexterity and concentration trained in layers of climbing play, with varied supports, grips, nets and inclined surfaces.

Platform maze – climb up and through to reach the top.

Eyes – imagine taking in the outside world through the eyes of the owl.

Hammock – a swaying break with friends from the wilder play outside.

Wide Slide H: 178 cm – the wide slide allows for a social sliding experience.



Interconnected, responsive climbing nets – support cross-coordination and muscle strength, and support social interaction with the inside thanks to their transparency.

## Play sculpture THE OWL

The Owl offers 360-degree play for children from the age of 4 and above. Strategically placed climbing grips and nets on the wings and body help challenge balance, cross-coordination and muscle strength. The top platform can also be accessed through a maze of platforms inside the stomach of The Owl.

From the top platform, the children get to take in the world through the eyes of The Owl, and experience thrill and stomach tickling when sliding down the wide slide together. A hammock hidden underneath the tail gives the opportunity for a short, swaying break.

### POTENTIAL SPECIFICATIONS:

Age: 4+  
Total height: 362,5 cm  
Safety zone: 84.8 m<sup>2</sup>  
Max. fall height: 290 cm





# Migration of whales

A sea of opportunities

## TWO BUOYS

(RED PAINTED SPINNERS)  
DIVIDE THE AREA INTO THEMATIC ENVIRONMENTS  
FEATURING WIDE RANGE  
OF ACTIVITIES

## A 5,000-KM JOURNEY

SEARCHING FOR FOOD,  
EVERY YEAR THE WHALE  
MOVES FROM THE WARM  
TROPICAL PACIFIC WATERS,  
UP THE WEST COAST OF NORTH  
AMERICA TO THE PLANK-  
TON-FILLED ARCTIC.

## HERO PRODUCT: THE WHALE

CLIMBING, SLIDING, DISCOVERING.  
ADVENTURE FOR ALL AGES AND  
ABILITIES

## CENTRAL AMERICA

CLIMB THE CACTUS USING THE  
NON-SPIKY GRIPS, TAKE THE BRIDGE  
TO THE TOP OF THE VOLCANO, THEN  
FOLLOW THE LAVA FLOW TRACK TRAIL.

## DOLPHINS

SPRINGING ACTIVITY FOR  
THE SMALLEST USERS



## THE ARCTIC

IGLOO - BOTH CLIMBING STRUCTURE  
AND SHELTER FOR RELAXATION  
AND MORE PRIVATE PLAY AND  
SOCIALISATION

## ICEBERGS ON SPRINGS

SENSE OF BALANCE + FUN  
FOR MULTIPLE KIDS

## MAGNETIC FIELDS

THE EARTH'S MAGNETIC PULL  
HELPS WHALES NAVIGATE -  
HERE ON THE MARKED  
SURFACE YOUNG INVENTIVE  
MINDS CAN GET FROM A  
TO B WITH GAMES LIKE  
HOPSCOTCH.

## NORTH AMERICA

TEEPEE, FIREPLACE, SEESAW AND  
BALANCE BEAMS, A BREAK IN THE  
JOURNEY FOR ROLE-PLAYING WITH  
PHYSICAL AND SOCIAL ACTIVITIES.













# The Whale

## Oceans of play

'They're like barnacles,' says Kris as she holds on to the brightly coloured climbing grips that cover the whale's blue sides. She hears Jenny and Joe laughing from the belly within. They'd used the netting to clamber into the whale's gaping mouth and get inside. Joe is stuck in the membranes that he has to pass to reach the platform Jenny is on. His strength and cross-co-ordination will get him there so they can go down to-

gether, as planned, on the wide slide.

'There're so many places to just sit and look,' says Kris, 'but best of all I love the colour, blue.'

'I like the teeth, they're huge,' adds Joe.

At the age of five, Joe has never seen a real whale, but the little town he lives in knows them well. Each summer, as the seas further south warm up, the whales head to the colder waters of the north. Every day in

season, the numerous boats that used to go fishing, carry people with binoculars and cameras, eager to see the gigantic mammals up close. That was why the local municipal council voted that the new playground should have a whale as its centrepiece. To families on the freeway, it stands out, often triggering requests from the back seat. 'Gee, a whale, can we get up close?' The answer is a yes, up and very close.





## Loaded with play

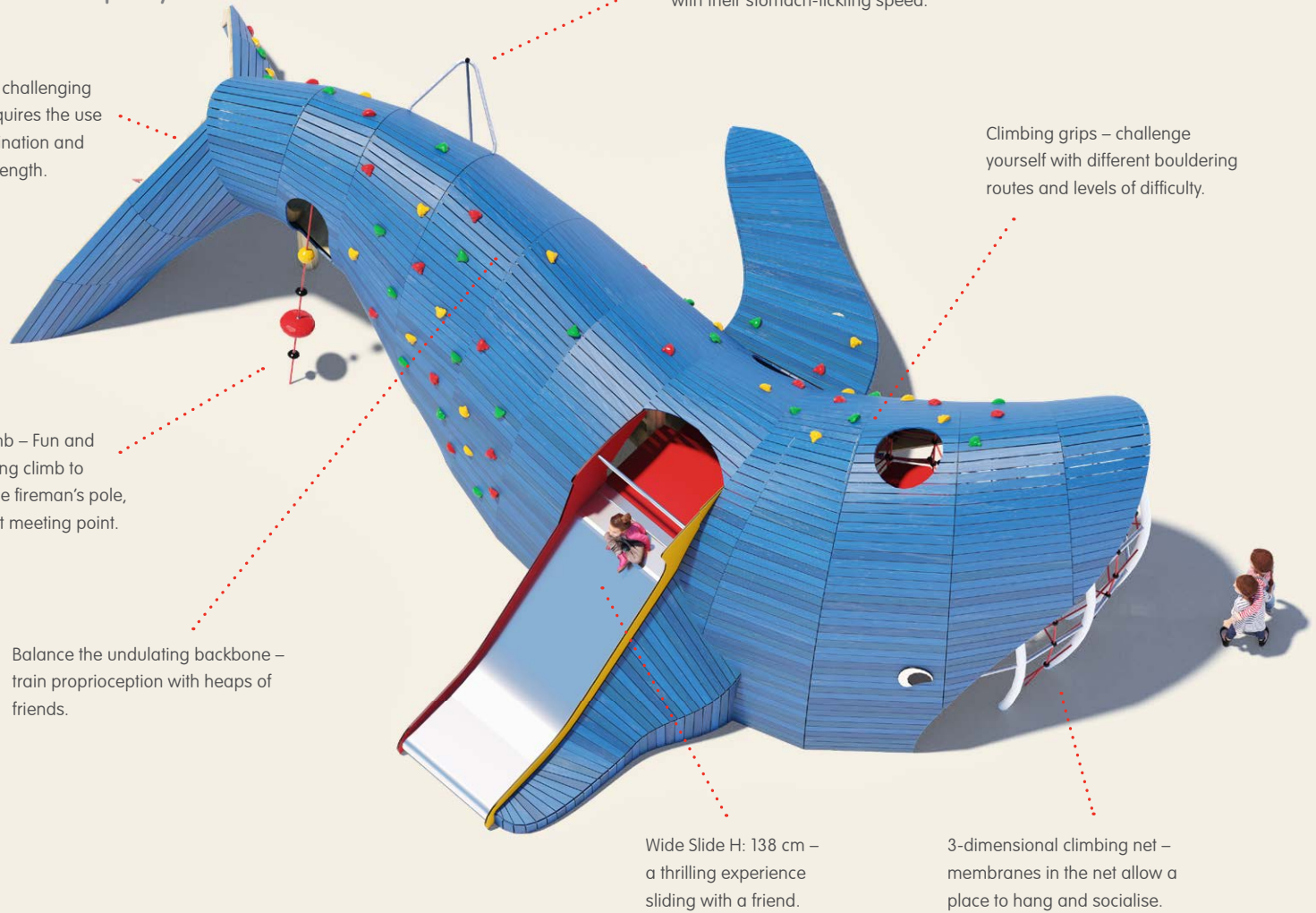
Rappelling – a challenging access that requires the use of cross-coordination and upper body strength.

Rope climb – Fun and challenging climb to access the fireman's pole, and great meeting point.

Balance the undulating backbone – train proprioception with heaps of friends.

Fireman's pole H: 108 cm – appeal to daredevils with their stomach-tickling speed.

Climbing grips – challenge yourself with different bouldering routes and levels of difficulty.



Wide Slide H: 138 cm – a thrilling experience sliding with a friend.

3-dimensional climbing net – membranes in the net allow a place to hang and socialise.

## Play sculpture THE WHALE

The large whale offers challenging physical play for big and small children from the age of four. The 3-dimensional climbing net inside the mouth is filled with membranes, making it a fine meeting point for social interaction. The reward for climb-

ing the net is the thrilling experience of sliding down the wide slide with a friend. The outside of The Whale is filled with climbing grips, creating an endless amount of bouldering routes that help build the child's cross-coordination and muscle strength.

POTENTIAL SPECIFICATIONS:  
Age: 4+  
Total height: 300 cm  
Safety zone: 95 m<sup>2</sup>  
Max. fall height: 300 cm





# The Journey

Expressing history

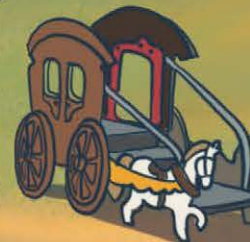
## TRAVELLING

BY SHIP AND BY TRAIN.



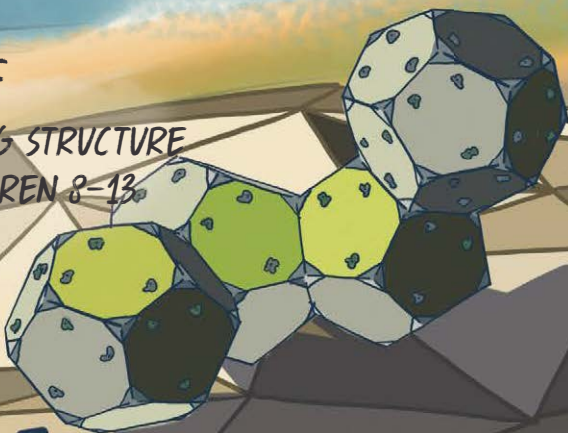
## CARRIAGE

- FIT FOR TODDLERS
- ROLE-PLAY
- MOTOR SKILLS



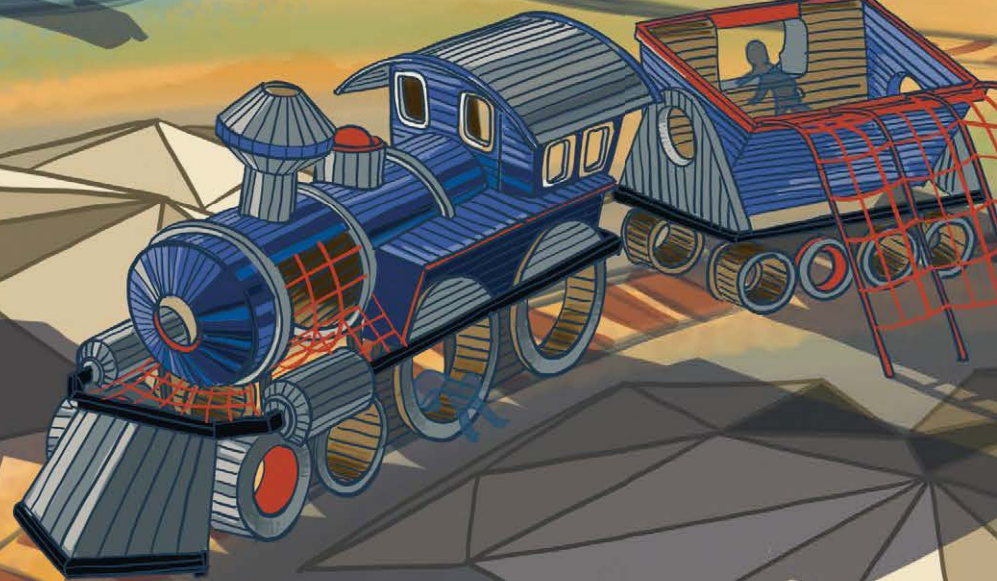
## ROCKY CLIFF

- COOL CLIMBING STRUCTURE
- FIT FOR CHILDREN 8-13



## TRAIN SPEEDING THROUGH THE GORGE

- MULTIPLE PHYSICAL ACTIVITIES
- ROLE-PLAY - SOCIAL ACTIVITIES
- COOPERATION
- RELAX ZONE
- PHOTO OP
- DYNAMIC DESIGN
- DRAMATIC SETTING



THE TRAIN TRACK - TRAIL FOR CHILDREN TO FOLLOW  
WIGGLE BRIDGE + SUSPENDED BRIDGE  
= OBSTACLES TO OVERCOME







THE HILLS - LARGE NET STRUCTURE  
= ADVENTUROUS PHYSICAL PLAY

SMALL HOMESTEAD OF THE SETTLERS

- ROLE-PLAY
- SAND AND WATER PLAY

FLOWERS

- = SPINNER BOWLS
- SOCIALISING
- COMMON FUN

SWINGS

- BIRDS NEST SWING
- DOUBLE SWING
- SWINGS ARE A MUST!

BOXES FALLEN FROM THE WAGON

- ACCIDENTAL LAYOUT
- = SPACE FOR CHILDREN TO GET CREATIVE AND COME UP WITH NEW GAMES

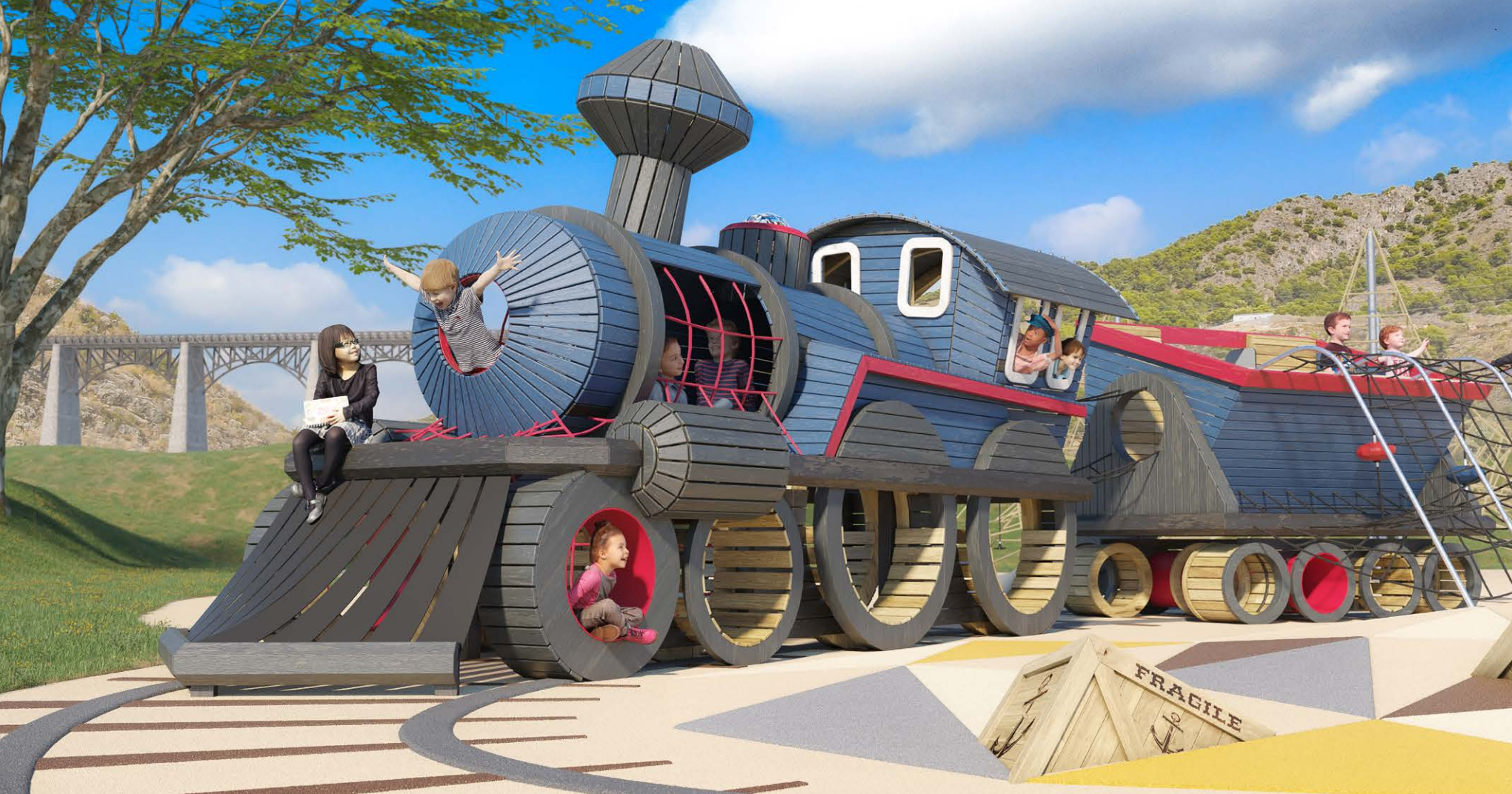












# The Train

## Destination enjoyment

Trains, no matter where on earth they are, all look similar, but distinctive; perform different roles which have the singularly common aim of getting somewhere. They transport people, fluids, materials and, as in the case of James and Tom, enormous quantities of fun. 'She's all stoked up,' cries James climbing on board the engine, 'let's get back on the road.' 'You mean rails,' Tom corrects. Whatever, the western styled 'Puffing Billy' was ready

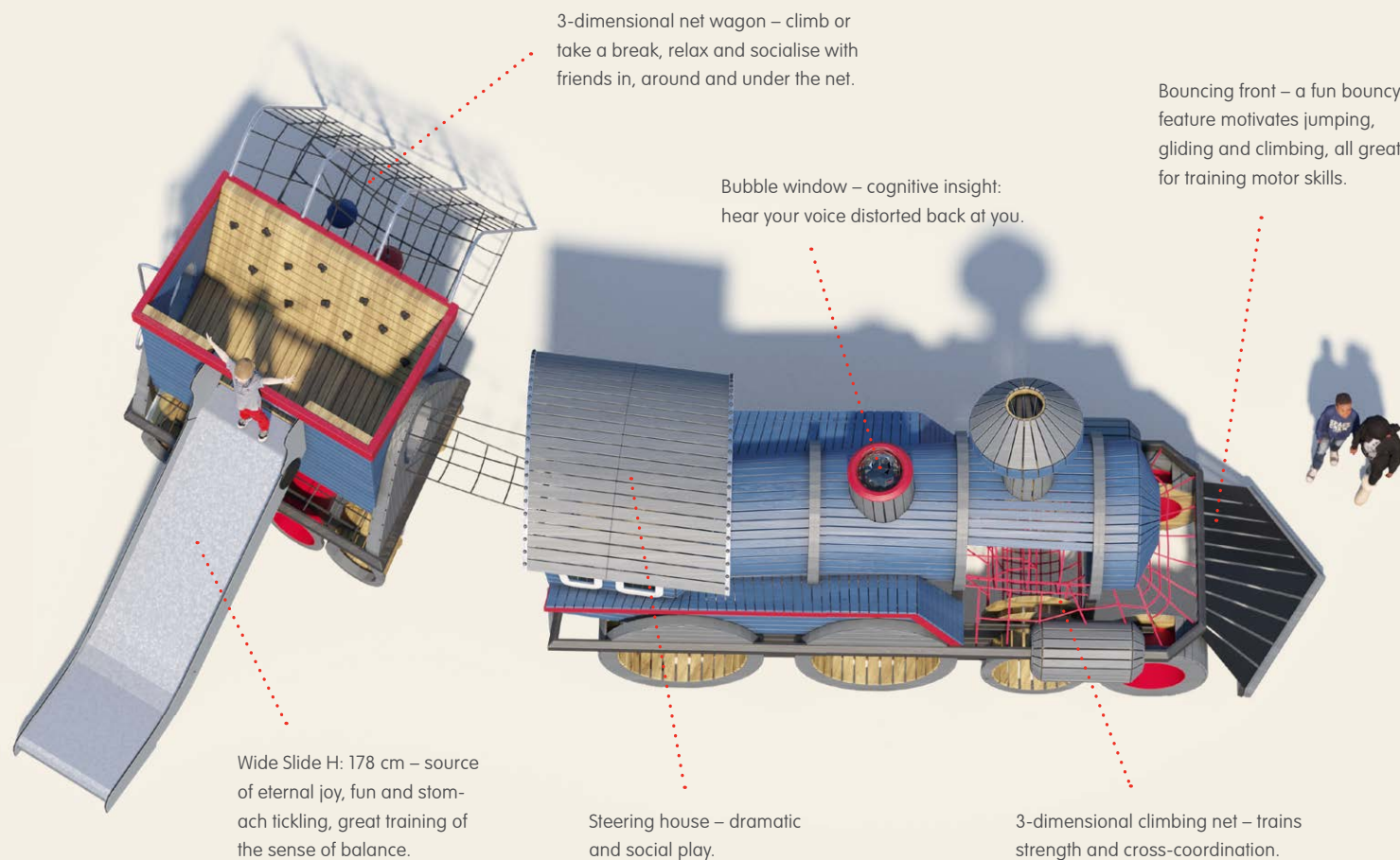
to go, taking the children from the small town on a historical journey that told of how their country was populated by people from all over the world, but transformed by the railroad. It was the iron horse that tamed the horizonless prairies. It was the railway companies that decided when and where it would stop for water and wood or coal, and thus become the centre of a new town. The wooden play structure stands as the central fea-

ture of the new playground and the lives of all the children playing on it. Marianne and Billie Jean climb on board. 'Where are we going to?' the girls ask in unison. 'To the end of the line,' Tom says. 'Where's that?' asks Marianne. 'That's when we get called home for supper,' says James putting another imaginary log into the fire box.





## Loaded with play



## Play sculpture THE TRAIN

The Train and Wagon present a fun and challenging play experience for big and small children from the age of four. In the train cab a large dashboard motivates dramatic play and trains logical thinking. The Kettle presents as a circular space to climb through, and a 3-dimensional net allows for accessing

the space under the train. The Wagon, apart from inspiring use of language in imaginative dramatic play, stimulates physical play, through climbing and sliding. All the inside and outside meeting points support social interaction.

### POTENTIAL SPECIFICATIONS:

Train  
Age: 4+  
Total height: 341 cm  
Safety zone: 50 m<sup>2</sup>  
Max. fall height: 150 cm

Wagon  
Age: 4+  
Total height: 255,6 cm  
Safety zone: 55 m<sup>2</sup>  
Max. fall height: 210 cm





# Jurassic Play

The pre-historic playmate

HERO PRODUCT - CENTRE OF GRAVITY OF THE PLAYGROUND

EXPLORE AND ESCAPE

CLIMBING ACTIVITY ENDORSING THE MAIN THEME INSPIRED BY THE INSECTS

TRAIL TRACK

ENHANCES PHYSICAL FITNESS  
WOBBLE BRIDGE+SETS OF STILTS -  
BALANCE TRACK RIDE -  
STRENGTHS AND ENDURANCE

SPRINGER WATER LILIES

- CUSTOMISED ITEMS MIMICKING THE SWINGING ON WAVES



## SAND PIT - PLAY FIT FOR TODDLERS

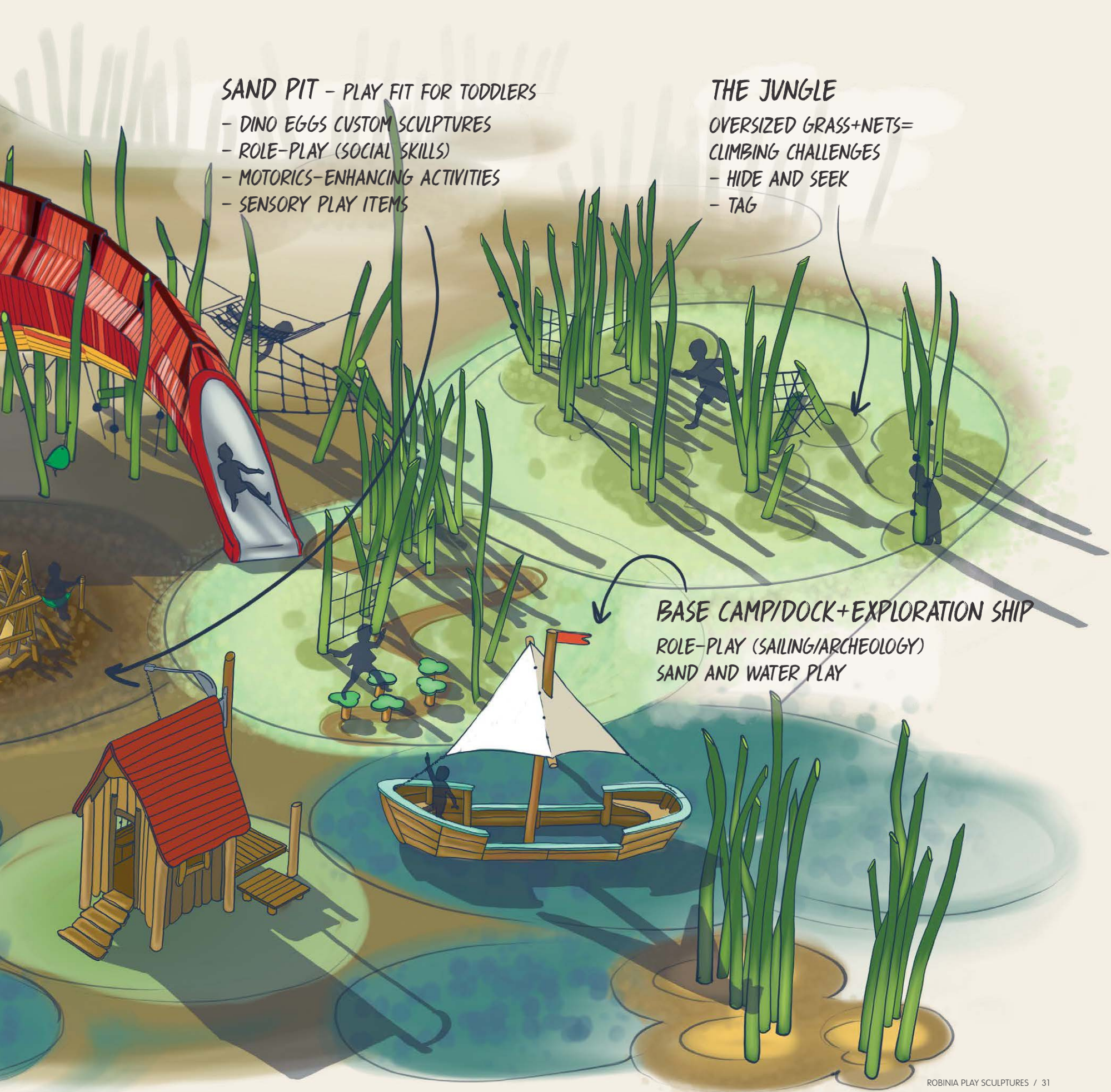
- DINO EGGS CUSTOM SCULPTURES
- ROLE-PLAY (SOCIAL SKILLS)
- MOTORICS-ENHANCING ACTIVITIES
- SENSORY PLAY ITEMS

## THE JUNGLE

- OVERSIZED GRASS+NETS=
- CLIMBING CHALLENGES
- HIDE AND SEEK
- TAG

## BASE CAMP/DOCK+EXPLORATION SHIP

- ROLE-PLAY (SAILING/ARCHEOLOGY)
- SAND AND WATER PLAY















# The Dinosaur

## A journey back in time

For the first time in 66 million years, a giant dinosaur dominates the landscape. It would swallow six-year-old James in one bite, if it wasn't wooden. He'd seen the movie, got the toys, but this is special. A huge beast that you run into and then slide out its long tail. As James ran inside the body, the shafts of light from the spaced wood panels increased the sense of excitement and adventure. The green supporting poles outside, like the grasslands the dinosaur would have roamed, give the sculpture a third dimensional life.

James' dad stepping up on the huge hind foot, put his head through the door and roared into the dinosaur's body. There were screams of surprise, thrill and delight. Behind him Karen pops her head out of a huge wooden egg. 'What's that?' she shrieks and then laughs.

The dinosaur and its eggs stand on the perfect spot. Thirty years ago, children playing in the former brick quarry stumbled upon a small fossil. The experts arrived and to their professional joy further fossils and

bones emerged to confirm what they'd always suspected; the area had been a rich playground for the giant dinosaurs of the Jurassic era. Now a generation on, the area 'cleared' of all valuable finds, it is time to give something back. What could be more fitting the local council decided than a play sculpture that would open the minds of children connecting a distant geological past and a municipal future.





## Loaded with play

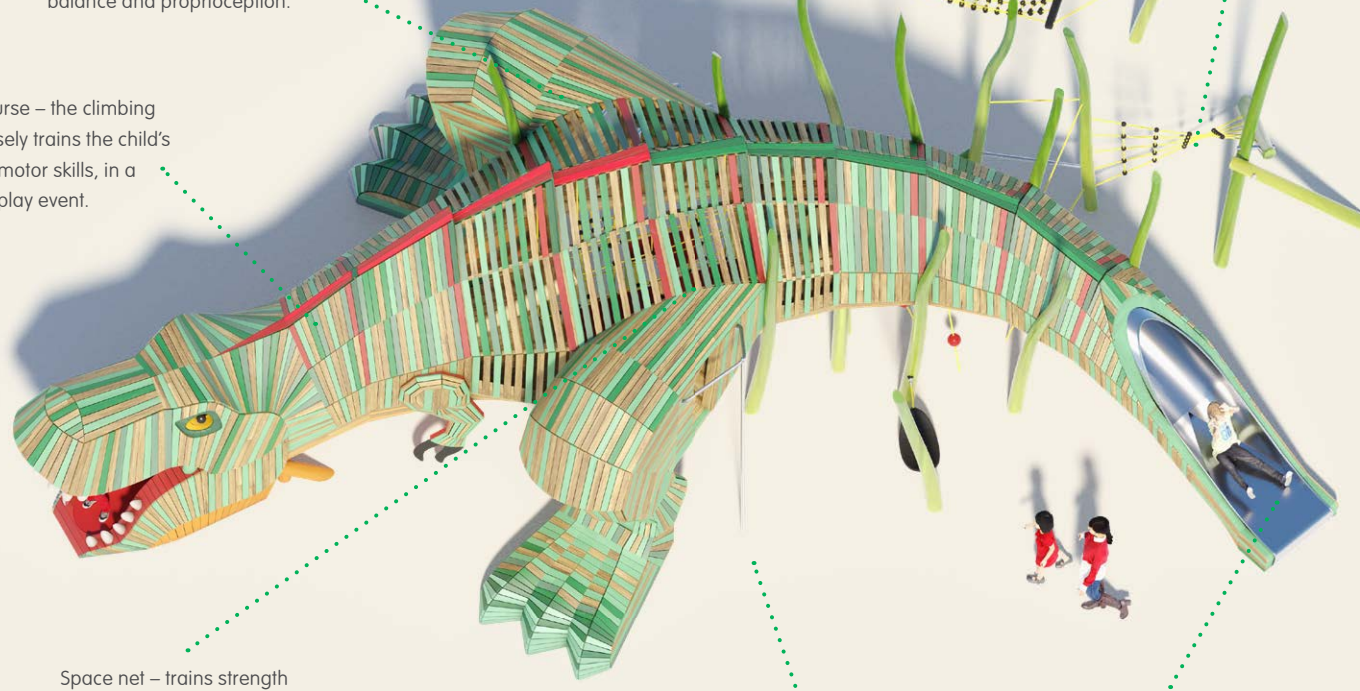
Banister bars – joyful daring sliding experience, training balance and proprioception.

Obstacle course – the climbing variety intensely trains the child's muscle and motor skills, in a great social play event.

Space net – trains strength and cross-coordination.

Hammock – a great place to sway and hang with your friends, training spatial awareness.

Agility net – climbing, balancing or crawling up, down and through stimulates coordination and proprioception: the navigation of your body in space.



Fireman's pole – dare to slide down and experience the thrill and stomach-tickling feeling. Jumping down supports bone density.

Tube Slide – thrilling experience of sliding fast through the curved tunnel slide. And a great balance trainer.

## Play sculpture THE DINOSAUR

The large dinosaur holds a lot of exciting physical play features for big and small children from the age of six. To reach the slide, and have the joyful and stomach-tickling experience of sliding through the tail of The Dinosaur, the children must

climb through its mouth, and conquer the challenging path over membranes, through nets and hoops, by using their body strength, balance, cross-coordination and ability to plan ahead.

### POTENTIAL SPECIFICATIONS:

Age: 6+  
Total height: 415 cm  
Safety zone: 100 m<sup>2</sup>  
Max. fall height: 250 cm





# Beside the seaside

Where seagulls dare









# The Lighthouse

## Beams of joy

The lighthouse sits proudly on the town's logo, it is part of the school badge, it is the name of a bakery, and the pub – and now is the central feature in a statement – making play-ground. Lighthouses, real or play, are an indisputable part of daily life in the little port.

The early morning mist had dampened the handles on the climbing wall, but it was still Sally and Marcus's favourite way to the top. 'I'll call the colours out, and you have to use just them,' instructed Marcus as Sally carefully made her way to the door, a tantalising three metres above the ground. 'Red, blue, blue, black, red,' he called. Marcus took the winding stairs to the top. Each day on their way to school,

they put down their bags, climb and look out over the headland. At school they'll tell the class what they had seen. They never tire of the experience because they know that before the day is out, they'd be back, alongside their mates. In the distance, the school bell started to ring.

'Race you,' shouted Sally, and Marcus immediately left the top down some steps and jumped onto the long slide. Sally followed slowly.

'Beat you,' Marcus declaring with a degree of satisfaction.

'I let you,' replied Sally smiling as she picked up her schoolbag, 'I wanted you to dry the slide.'

It was Marcus's first lesson of the day.





# Loaded with play



## Play sculpture THE LIGHTHOUSE

The Lighthouse presents with a variety of play activities and physical challenges for children from the age of four. Accessing The Lighthouse from the playhouse or the secret entrance under the slide, the children can climb to the top

and discover all the different play activities along the way. The climbing wall on the outside of The Lighthouse allows for physical challenge, that supports cross-coordination and strength to reach the top.

POTENTIAL SPECIFICATIONS:  
Age: 4+  
Total height: 628 cm  
Safety zone: 42 m<sup>2</sup>  
Max. fall height: 300 cm





# Crop cargo

Cultivating minds and bodies

OFFERING TRUE FARMING EXPERIENCE  
SENSORY SKILLS. GENUINE NATURAL  
ELEMENTS EQUIPPED WITH ALL  
AGRICULTURAL NECESSITIES

SAND PIT  
FOR PRACTISING  
PLANTING CROPS

REED  
NET CLIMBING  
FREE GAME AREA

WELL AND PLANTING FIELD

FARMING EXPERIENCE  
WITH NATURAL ELEMENTS  
(WATER AND SAND)

- MOTOR SKILLS
- COOPERATION SKILLS

CROP FIELDS

- EACH FIELD - DIFFERENT ACTIVITY
- MULTIPLE CROSS TRACKS
- CREATIVE THINKING
  - PHYSICAL STRENGTH





## THE POND

DUCK SPRINGERS

ROTARY PLAY ITEMS

- SOCIAL SKILLS
- SENSE OF BALANCE

## TRUCK

THE HERO PRODUCT  
FIT FOR SCHOOL-AGE CHILDREN  
WIDE RANGE OF ACTIVITIES

- ROLE-PLAY
- COGNITIVE SKILLS
- PHYSICAL STRENGTH

## FARM ESTATE

BARN AND TRACTOR

- PHYSICAL PLAY
- ROLE-PLAY













# The Truck

## Driving local culture

For over three centuries, the market town has been famous for its cheese and meat pies. Now it has another attraction, drawing visitors, stimulating local pride, one that reflects its connection with the rich farmland that surrounds it – a wooden truck play sculpture. It was, the local council decided when selecting the truck, something that had a message for everyone. It is impressive and the young children climbing in

and out of it make it seem almost life-sized. The truck makes its way along an anonymous road of non-slip rubber. Parents looking on thinking ‘if only real roads were as safe.’

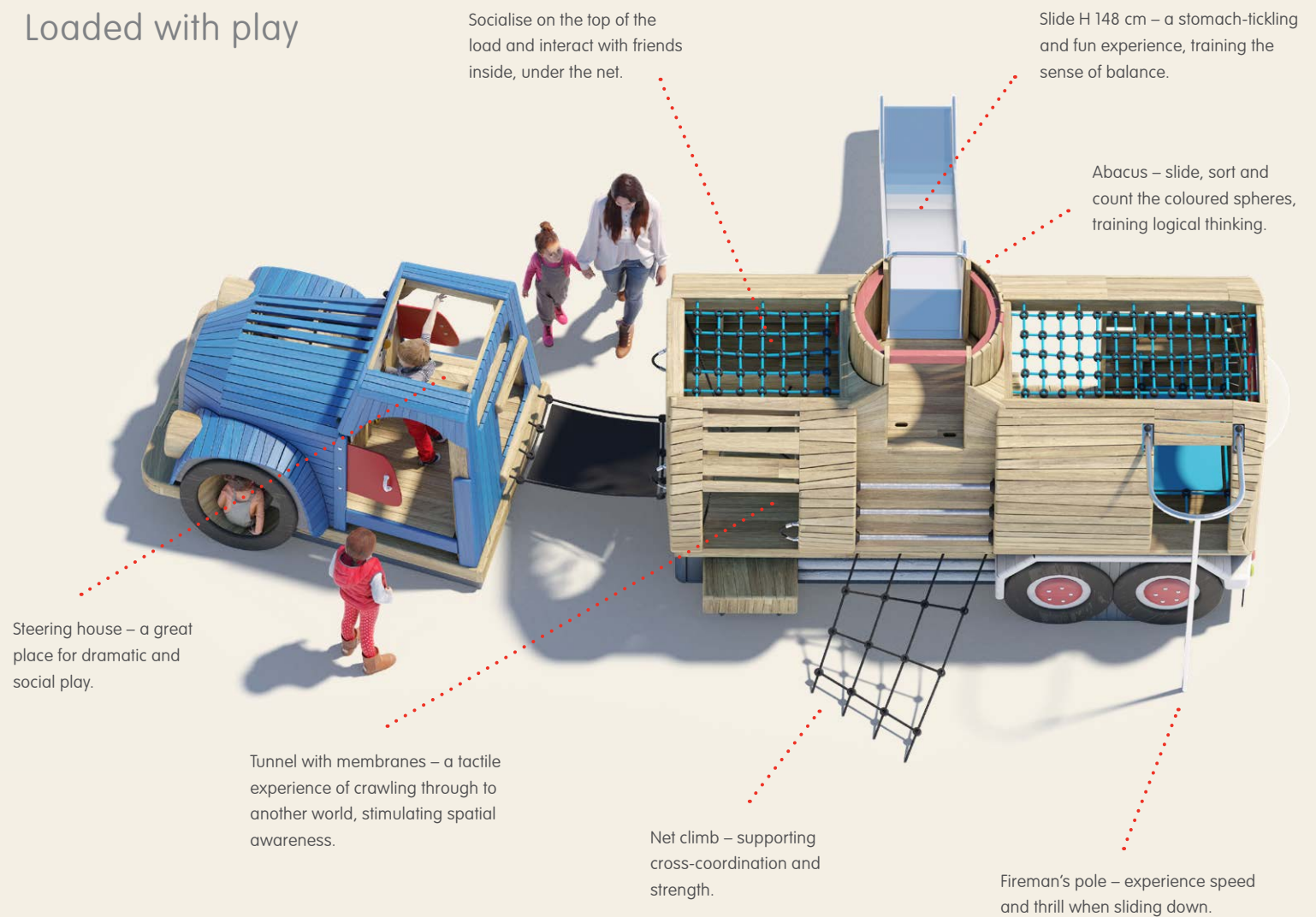
What it carries, milk or feed, seeds or fuel, is only in the minds of those on board. With its size and numerous entry and exit points, it is hard to count exactly how many children were playing. The noise and pile of

discarded backpacks suggests maybe twenty, but for the moment only Michael and Jenny can be constantly seen. They’re up front, with Jenny at the wheel. ‘We’ve got to get this to the dairy whilst it’s fresh,’ shouts Jenny. ‘I’m driving quickly, but carefully.’ ‘Yes, you don’t want to turn it into cheese just yet,’ laughs Michael.





## Loaded with play



## Play sculpture THE TRUCK

The Truck offers a variety of activities that support physical, social and dramatic play for children from the age of two. The steering house of The Truck presents with a variety of small creative and cognitive play activities, supporting the development

of fine motor skills and dramatic play. The tank is a maze with different physical activities like nets, crawl-through tunnel and membranes, all designed to support the development of important motor skills.

### POTENTIAL SPECIFICATIONS:

Age: 2+  
Total height: 230 cm  
Safety zone: 55 m<sup>2</sup>  
Max. fall height: 182 cm





# Pumpkin Patch

Adventures in a micro world

## COLOURFUL SPINNER BOWLS

- SOCIAL ACTIVITY
- SPINNING EXPERIENCE
- BALANCE EXERCISE

EXPERIENCE LIFE AT  
THE GROUND LEVEL  
FIT FOR PRE-SCHOOL  
CHILDREN

## SPIDER WEB

CLIMBING EXPERIENCE FOR STRONGER  
CHILDREN SPIDER MADE OF FLEXOTOP  
= BOUNCY BODY FOR JUMPING

## GRASS STILTS

PART OF CROSS TRACK THE  
PLAYGROUND ITEMS FORM MULTIPLE  
OPTIONAL TRAILS OF HOW TO PASS THEM



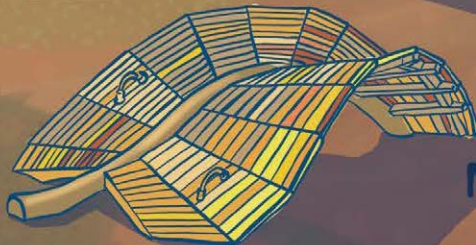
## EARTH WORM

- BALANCING ACTIVITY
- CROSS-TRACK ITEM
- DESIGN FIT TO THEME



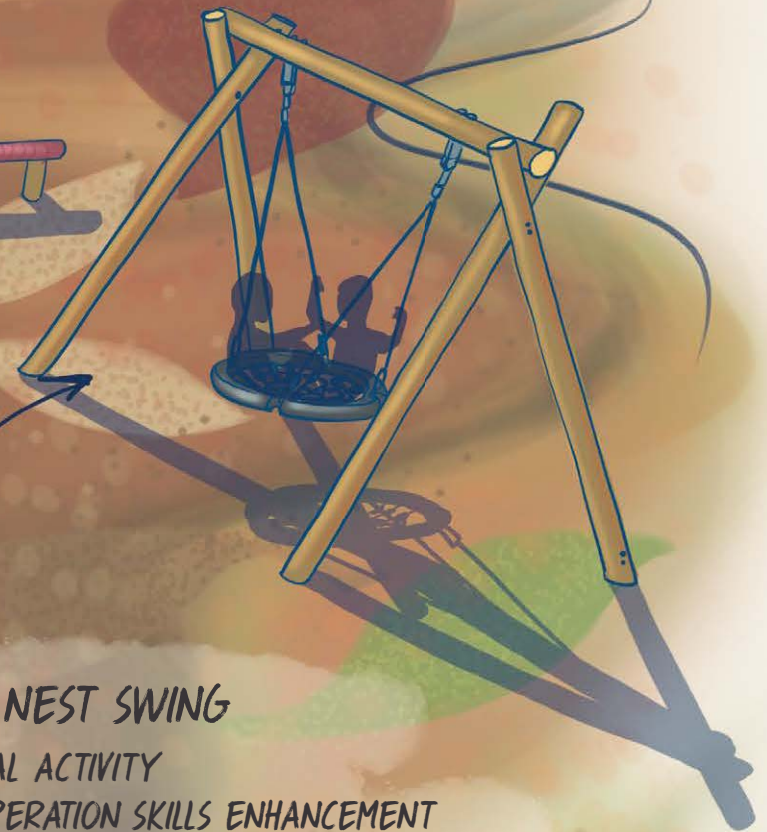
## CUSTOM LEAF ITEMS

- LEAFY BRIDGES
- CROSS-TRACK ITEMS
- STRENGTH + BALANCE



## BIRD NEST SWING

- SOCIAL ACTIVITY
- COOPERATION SKILLS ENHANCEMENT
- SWINGING EXPERIENCE



## THE PUMPKIN - HERO PRODUCT

FEATURES MUST-HAVES:

- SIMPLE SLIDE
- ROLE-PLAY ACTIVITIES
- THEMED PLAY
- BALANCE AND MOTOR SKILLS ENHANCEMENT



## ANT SPRINGERS

- BALANCE ACTIVITY FOR TODDLERS
- THEMATIC DESIGN















# The Pumpkin

Nourishing minds, growing friendships

'Let's play insects,' Lisa shouts out to her playmates, 'today I'm a bee.'  
'Do bees get caught in spiders' webs?' Matt asks.  
'I don't know, but not me,' Lisa replies and buzzes over to the web that connects the tall green spikes of grass to the pumpkin, the stand-out feature in the new playground that is drawing the young children from the large estate nearby. From living in a world of concrete and glass, here they are free to expand their bodies and minds.

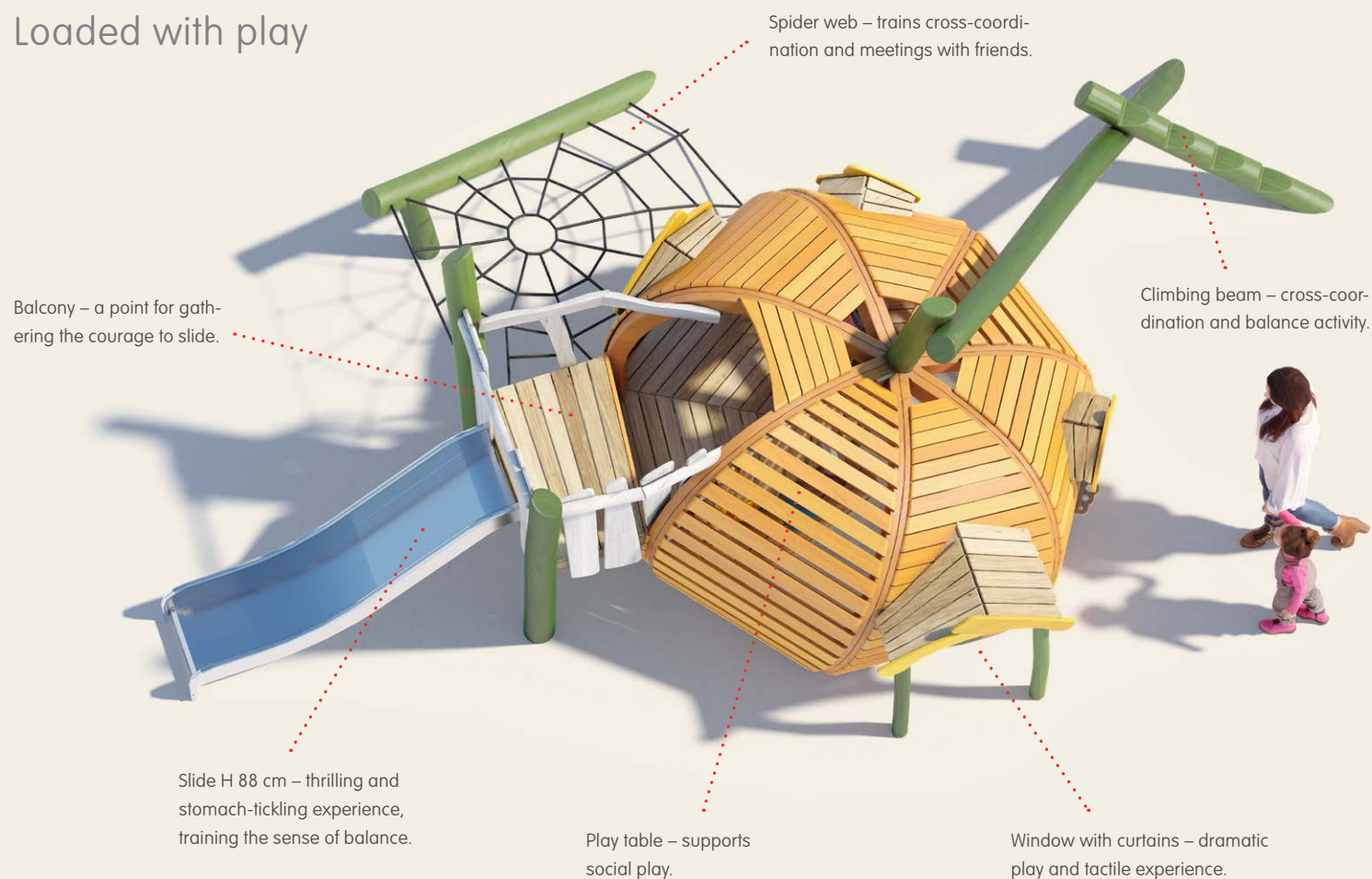
Inside the large orange pumpkin, the sun cuts through the slats, making it a friendly den, a sanctuary, a place where secrets are shared and friendships started. All around are giant insects, snakes and worms. They are larger than life, or maybe not, in this micro world it is the children who are transformed. Suddenly they seem small, their apparent vulnerability generating added excitement.  
Peter clambers in and out of the pumpkin, he loves the many ways to play with the sculpture. His current fa-

vourite is the long green blade of grass that connects the top of the pumpkin to the ground. The challenge today is to balance and walk to the top. Lisa follows and so does Matt.  
'We're more like ants,' says Matt as the trio set off following each other in a line to investigate and conquer a magical world of micro nature.





## Loaded with play



## Play sculpture THE PUMPKIN

The Pumpkin is a small and fun play structure for the youngest children from the age of two. It offers a variety of physical, social and dramatic play that support the child's cognitive development. Inside a small play table and window with membrane

curtains inspire dramatic play and stimulate the tactile sense. Small platform steps lead to the balcony from where the small slide can be accessed.

### POTENTIAL SPECIFICATIONS:

Age: 2+  
Total height: 204 cm  
Safety zone: 45 m<sup>2</sup>  
Max. fall height: 88 cm





# Forest Floor

Playing in the heart of nature



















# The Chestnuts

## Nuts for fun

'It's like a squirrel's just left them here,' says Angie. 'It must have been a very big squirrel,' Tom replies laughing.

The playground, at the edge of the park famous locally for its chestnut trees with their broad leaves and spectacular fruits, is only months old. The local council, in discussing the play sculpture's theme, wanted it to blend in with and complement the surroundings. Already it is Tom and Angie's favourite part of the park,

the place where their legs and their minds run freely. The new place to meet up with friends. It is autumn and the leaves are turning a golden brown that blends in with the two big wooden structures. Similar in shape, they are joined by the coconut-rope bridge that Tom and Angie use time and time again. In quieter times, just sitting inside the nuts looking out, or relaxing on the hammock, is fun.

The park had quickly acquired nicknames for the two

impressive lead structures, 'easy nut and hard nut'. 'Hard nut,' shouts Angie and Tom knows that they'll leave it together, jumping on the wide slide, before running to the rope netting and getting back in and crossing the bridge to 'easy nut'. Here the first one inside the shell exits on the single slide, or by the ramp that makes the play sculpture universally accessible. At the end of the school day, there is often the cry, 'let's go nuts.' And they do.





## Loaded with play

Hammock – offers the opportunity for swaying gently, retracting from play.

Boarding net – stimulates cross-coordination.

Fireman's pole H: 148 cm – a challenging play feature that supports spatial awareness and bone density.

Wide Slide H: 148 cm – the wide slide allows for a social sliding experience.

Coconut Bridge from 118-148 cm – supports balance and coordination.

Playhouse – space for meeting friends.

Slide H: 118 cm – a thrilling and stomach-tickling experience.

## Play sculpture THE CHESTNUTS

The two large chestnuts offer a variety of physical and social play for children from the age of two. The staircase allows for easy access to the platforms of the small chestnut, with both a small slide and further access to the larger chestnut via the coconut bridge. The large and chunky coconut rope slopes up-

ward, and will sway gently as the children balance their way up or down the bridge, naturally making them use their balance and core strength to stay stable on the sloping rope. Arriving in the large chestnut gives access to the wide slide and the fireman's pole.

### POTENTIAL SPECIFICATIONS:

Age: 2+  
Total height: 502 cm  
Safety zone: 95 m<sup>2</sup>  
Max. fall height: 209 cm





*Highly durable and able to stand  
the test of weather and usage*

Your play sculpture will be built purely out of highly durable Robinia wood. Because Robinia wood naturally produces a lot of oil, it makes it highly resistant to any kind of rot. It is also very strong. Therefore, your play sculpture will stand the test of weather and usage.







*Robinia wood will age gracefully*





*We care about children.  
We care about their future on the planet.*



## *Robinia wood is great at every stage of its existence*

As a tree, it turns carbon dioxide into oxygen and pumps nitrogen back into the ground, helping crops around it. As a building material, it has a long lifespan due to its high level of natural preservatives.

Our Robinia supplies come from plantations in Europe and from natural woodlands that are under responsible, sustainable forest management. We can also supply Robinia wood certified by FSC®.

The pigment that we use for different colours is water-based and passes all tests by third parties (REACH, CPSIA and EN71-3) regarding unwanted substances.



[www.fsc.org](http://www.fsc.org)  
FSC® C004450

The mark of Responsible Forestry  
Look for FSC®  
-certified products



*Safe and certifiable like every product  
that we have designed since 1970*

At KOMPAN we have, since 1970, developed outdoor play equipment that stimulates and challenges children safely. Every part of the design, engineering, and building process is geared to ingrain safety into the final products that are certifiable by TÜV.







*We turn the idea into reality*

SO YOU AVOID THE PITFALLS ON THE ROAD OF CONSTRUCTION

Building a playground is not child's play. It is major construction. From clearing the area for foundations, to finishing off the site, it involves heavy equipment, extensive materials, complex products and expert knowledge. These factors must be precisely coordinated to avoid delays. Our teams have done it many times and are happy to take this load off your shoulders.

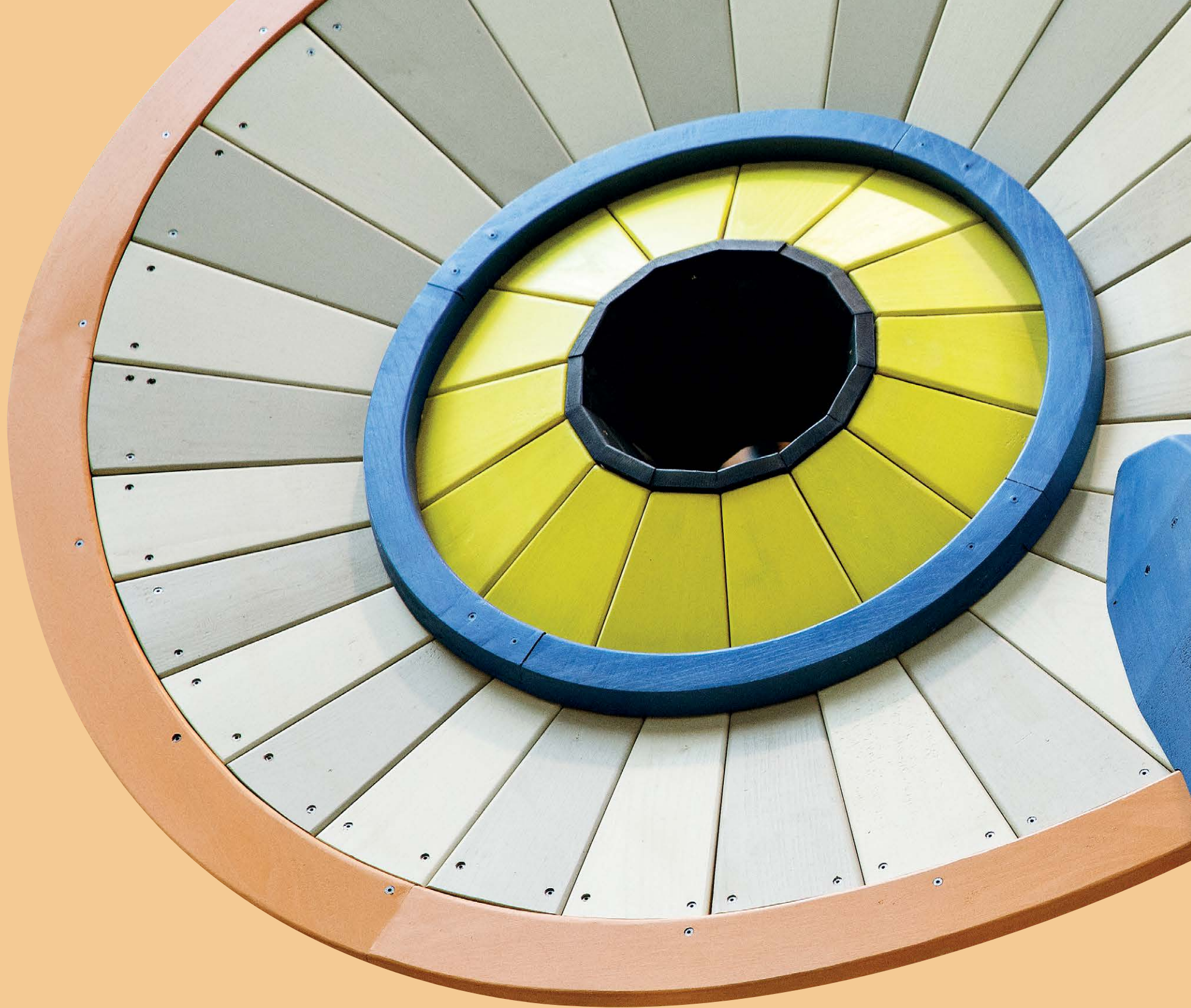


... LOADED WITH PLAY









KOMPAN Design Studio · KOMPAN International Sales · C.F. Tietgens Boulevard 32C · 5220 Odense SØ · Denmark  
Tel.: +45 63 62 12 50 · [export@kompan.com](mailto:export@kompan.com) · [www.kompan.com](http://www.kompan.com)